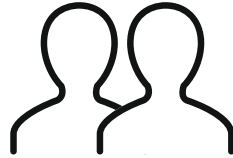


Du behöver

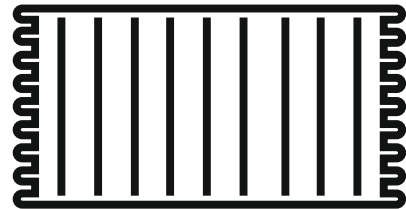
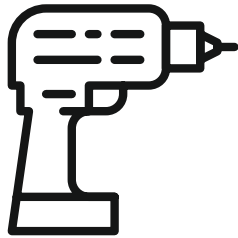
107928/1915



ca 0,5 timmar



2 personer



Lägg din produkt på ett mjukt underlag när du monterar

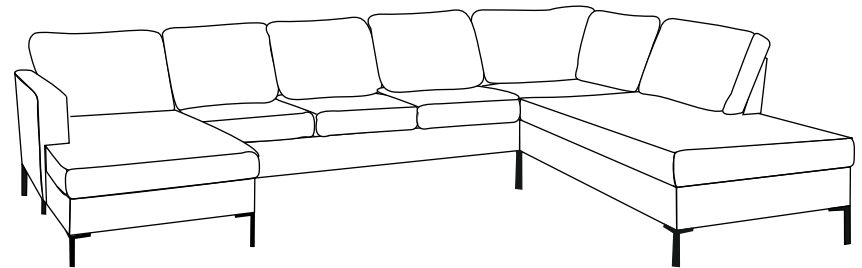


Har du frågor om monteringen av dina möbler?
Hör av dig till din Mio-butik eller ring till vår kundservice 020 66 44 00

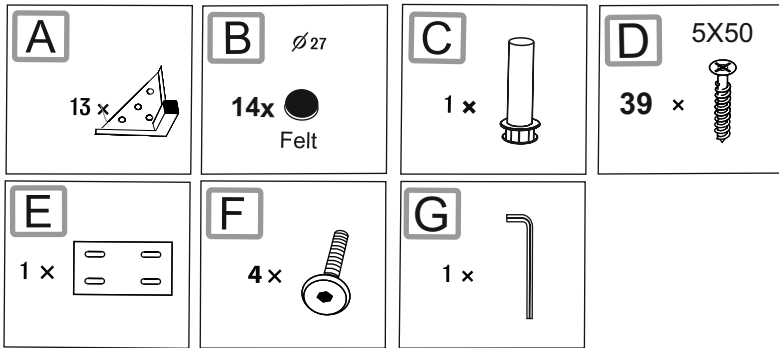
Monteringsanvisning

SIERRA

schäslong +4-sits+divan assembly

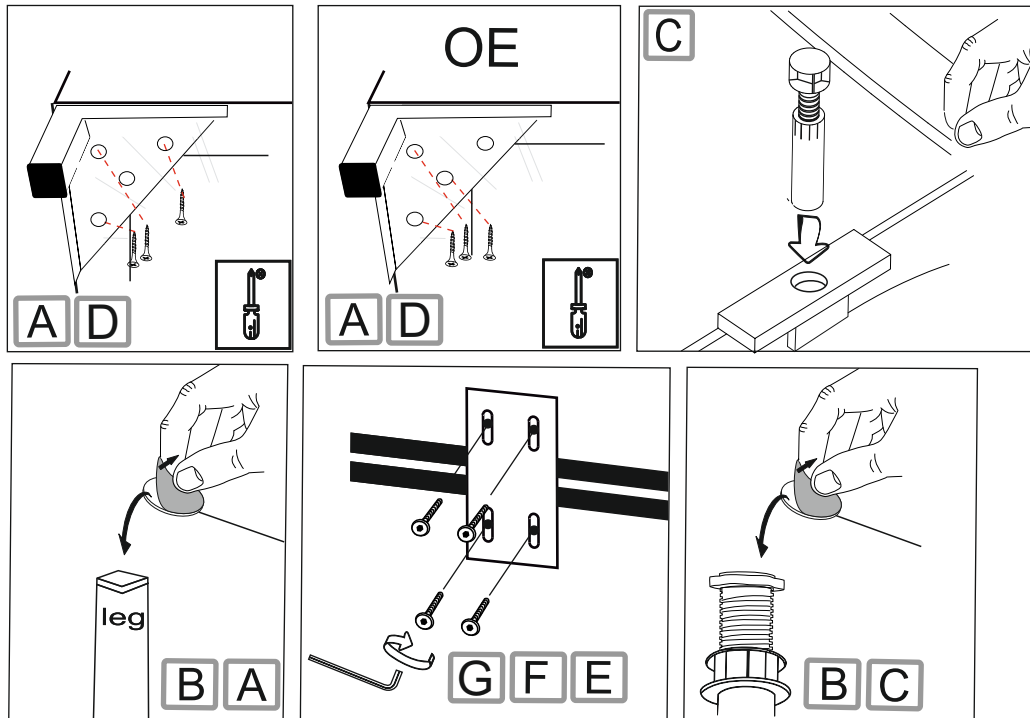


Ingående delar

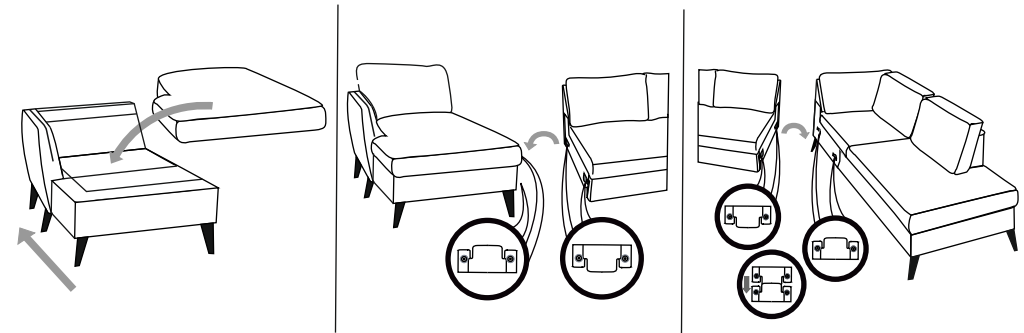
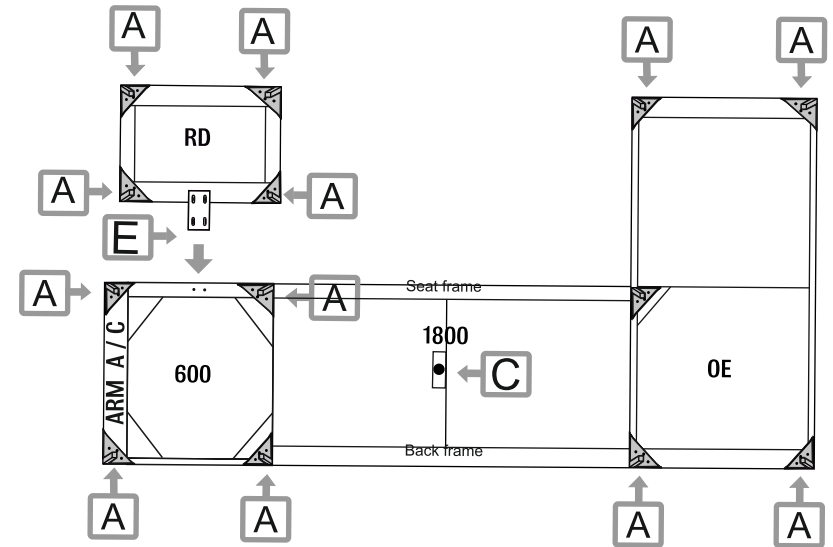


Montering

Följ instruktionerna steg för steg

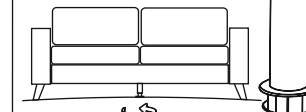


3



Important!

screw it 5-6mm
above the
ground



leave 5-6mm



Connect plastic
support legs to the
pre drilled holes.

C

4